

# Mt. Shasta Forest

Property Owners Association

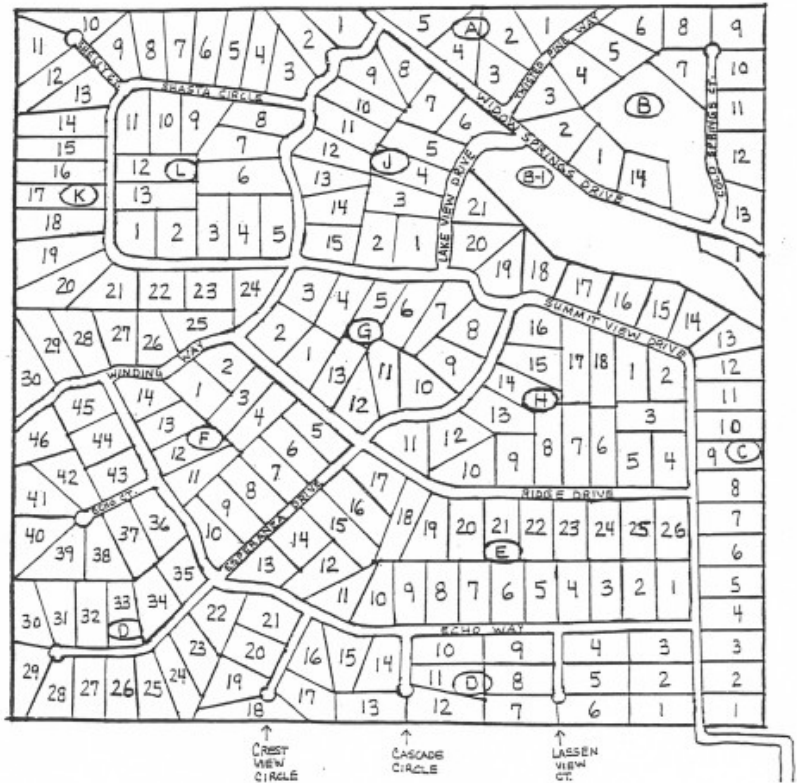
## Driving Instructions to Unit 4

From Highway 89, turn North onto Pilgrim Creek Road (Road 13). Continue driving North for 4 miles. You will cross over the McCloud Railroad tracks and over Mud Creek bridge. Soon after the bridge, on the left-hand side, you will see the Mount Shasta Forest welcome sign. Turn left, and follow the road (Jack Welsh Drive) into the forest. This is a U.S. Forest Service road.

The first thing you will notice is the Community Bulletin Board. Stop and check it out. You might find something fun and exciting to do during your visit. You are now on Winton Way. You have now arrived at Mt. Shasta Forest, so take your time and enjoy the great outdoors.

To get to Unit 4, you can keep following Winton Way until you reach Widow Springs Drive, or you can turn right on Hotlum and follow it up to Widow Springs Drive; it's up to you. When you get to Widow Springs Drive, turn right. Snowline Circle will be the first road on the left. Turn left on Snowline Circle. Go all the way to the top. It will turn left, and then turn right. You are now in Unit 4 on Summit View Drive. The first cross street is Echo Way.

UNIT 4



**REMEMBER...**  
**the Speed Limit is 15**  
**m.p.h!**